



MATATIELE
LOCAL MUNICIPALITY

MATATIELE LOCAL MUNICIPALITY

Research and analysis of ward profiling: Ward based plans

WARD 23

May 2018

TSHANI
CONSULTING C.C.

Table of Contents

1. Executive Summary.....4

2. Methodology5

3. Ward Overview.....5

4. Socio Economic Analysis6

5. Built Environment Assessment..... 12

6. Current Projects 14

7. Ward Needs and Priorities 14

List of Tables

Table 1: SWOT Analysis – Community Based Planning Program 2017 (Data Collection)	5
Table 2: Major Event within the Ward – Community Based Planning Program 2017 (Data Collection)	5
Table 3: Programmes within the Ward – Community Based Planning Program 2017 (Data Collection)	6
Table 4: Population Size and Distribution within the Ward – Community Based Planning Program 2017 (Data Collection)	6
Table 5: Social Grant Dependency within Ward - Community Based Planning Program 2017 (Data Collection)	7
Table 6: Child and Female Headed Households within the Ward - Census 2011	8
Table 7: Education Facilities within Ward - Community Based Planning Program 2017 (Data Collection) ..	9
Table 8: Churches and Religious Organisations within the Ward - Community Based Planning Program 2017 (Data Collection)	10
Table 9: Health Care Facilities: Community Based Planning Program 2017 (Data Collection)	10
Table 10: Community Halls - Community Based Planning Program 2017 (Data Collection)	10
Table 11: Economic Activity - Community Based Planning Program 2017 (Data Collection)	11
Table 12: Tourism Activities - Community Based Planning Program 2017 (Data Collection)	12
Table 13: Agricultural Activities- Community Based Planning Program 2017 (Data Collection)	12
Table 14: Products produced within the Ward	12
Table 15: Existing Skills within the Ward: Community Based Planning Program 2017 (Data Collection) ..	12
Table 16: Access to water: Community Based Planning Program 2017 (Data Collection)	13
Table 17: Source of Energy- Community Based Planning Program 2017 (Data Collection)	13
Table 18: Roads and Bridges within the Ward	14
Table 19: Current Projects within the Ward	14
Table 20: Ward Needs	14
Table 21: Ward Priorities	14
Table 22: Stakeholders engaged in community sessions- Community Based Planning Program 2017 (Data Collection)	15
Table 23: Key Social Challenges- Community Based Planning Program 2017 (Data Collection)	15

List of Figures

Figure 1: Gender Distribution	6
Figure 2: Age within Ward Distribution – Census 2011	7
Figure 3: Language Proficiency within Ward – Census 2011	7

Figure 4: Gender of Household Head	8
Figure 5: Types of Dwelling within Ward – Census 2011	9
Figure 6: Individual Monthly Income - Census 2011	11
Figure 7: Source of Water supply within the Ward - Community Based Planning Program 2017 (Data Collection)	13
Figure 8: Access to Sanitation Facilities – Census 2011	13

List of Plans

Plan 1: Ward 23 Locality	5
Plan 2: Education Facilities	9
Plan 3: Health Care Facilities	10
Plan 4: Other Social Facilities	11
Plan 5: Roads and Bridges within the Ward - MLM GIS	14
Plan 6: Ward Priority Plan	16

The following sections have been identified and populated as part of the analysis for Ward 23. The headings which have been covered are seen as critical topics for the ward analysis. When broken down one can properly understand and interpret the spatial economic status quo and development trajectory of the Ward.

1. Executive Summary

Ward 23 comprises of Good hope, Matolweni, Thafa, Fobane, Sekhutlong, Bethesda and Mangolong villages. There is total population of 6 339 recorded from census 2011 and 2175 households from community survey. The gender split within the ward of 23 is made up of 54% female and 46% males. The average household size within Ward 23 is 4 persons per household. It is evident that the most spoken language in Ward 23 is isiXhosa, followed by Sesotho.

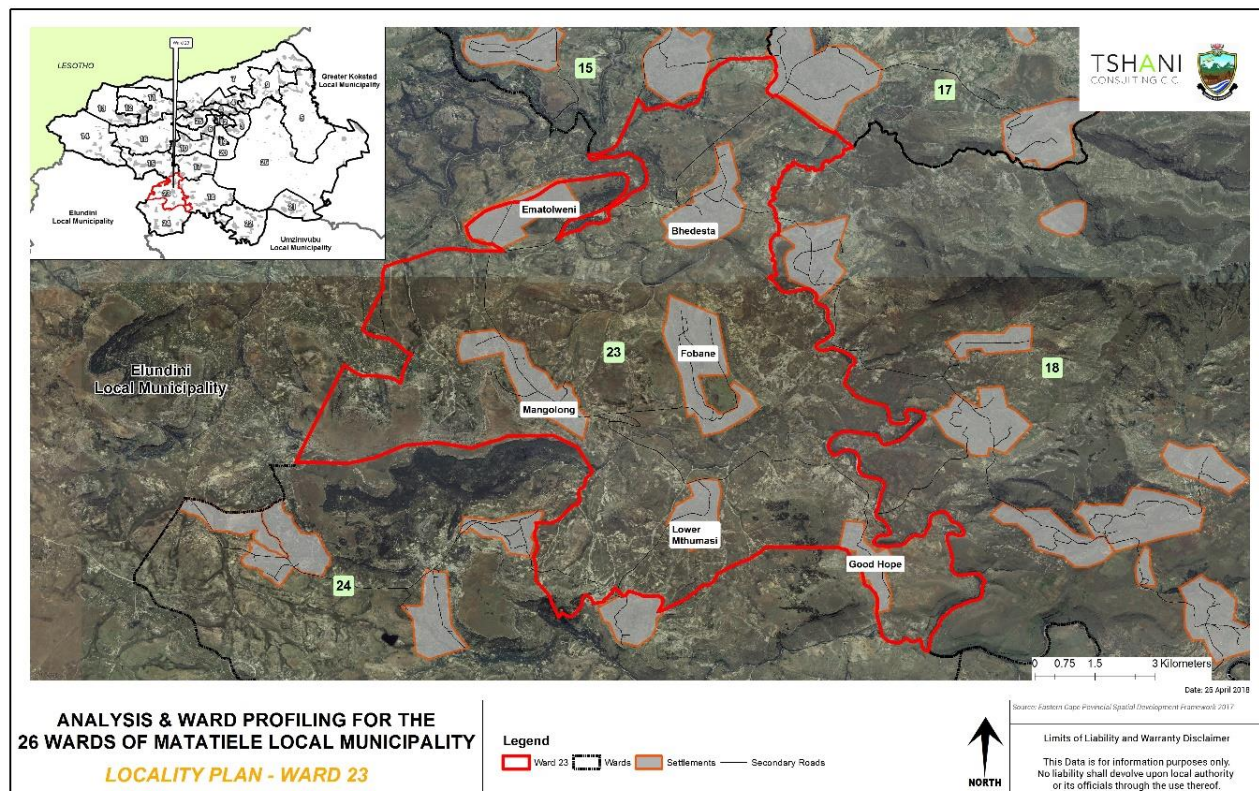
Products such as traditional clothing and crafts are available within the ward and all these are locally produced to create jobs for the locals. There is one (1) mobile clinic within the ward providing primary health services, basic check-ups and immunization among others.

In terms of water and sanitation, the District Municipality (ANDM) currently provides water and sanitation to Matatiele Local Municipality area. There is a large backlog with regards the provision of water and sanitation. This ward shows to have access to water services which is provided by the district municipality (ANDM) whereby three of the locations of the ward have access to water through communal taps that are within a 200 metres walking distance. The other villages depend on boreholes. This ward is one of the wards that are electrified within the Municipality. All the locations in Ward 23 use electricity as the main source of energy.



1.1. Locality

Ward 23 is located on the south western boundary of the MLM. It is surrounded by wards 24, 18, 17 and 15. On the western direction, it is bordered by Elundini Local Municipality. It is to be noted that all Wards which have been listed were identified through the community outreach programmes. The Village names captured on plans are as per the villages which exist on the GIS and Census databases.



Plan 1: Ward 23 Locality

2. Methodology

The methodology utilised for the analysis and profiling in this report was derived as follows:

1. Synthesis an interpretation of questionnaires and community feedback;
2. Translated information into a Strength, Weakness, Opportunities and Threats analysis;
3. Conducted a verification process on the populations profiles, social profile and economic profile using Census 2011 data which was conducted at a Ward level;
4. A detailed GIS mapping exercise was completed in order to translate the findings into spatially represented outcomes;
5. Ward needs, and priorities were identified for the wards;
6. Needs identified for the ward were translated into projects and a consolidated implementation plan together within financial implications was completed.

The analysis of ward 23 also took its '*point of departure*' from the primary data which was available from the data collection and community consultation completed in the previous phase

3. Ward Overview

The section below highlights the specific sections which were analysed in relation to ward 23. The SWOT analysis,

3.1 SWOT Analysis

The SWOT analysis was developed, through a series of engagement sessions with the local community and traditional leadership of Ward 23, by the municipality.

STRENGTHS	WEAKNESSES
<ul style="list-style-type: none"> 7 villages Electrified Agricultural Land Forestry Sand Mining Mobile Clinic Aloe 	<ul style="list-style-type: none"> Poor Access roads Teenage Pregnancy Shortage of skills Unemployment No structures for sport fields as the youth have potential in soccer Water
OPPORTUNITIES	THREATS
<ul style="list-style-type: none"> Possible funding of the shopping centre at R 56 road Cooperatives initiation Agricultural Land Brick making Plantation 	<ul style="list-style-type: none"> Access Road not being maintained for a long period Stock theft High crime rate (Rape, Housebreaking, drugs) HIV and AIDS Veld fire

Table 1: SWOT Analysis – Community Based Planning Program 2017 (Data Collection)

3.2 Major events within the Ward

The table below highlights the major events which have taken place /happened within Ward 23 over the last couple of years. The ward has experienced positive investment in the form of a civic centre, sports fields and tarring of internal streets.

EVENT/ OCCURANCE	YEAR	IMPACT
Heavy Rainfalls		Left homes Damaged Roads and bridges damaged
Snow disaster		Loss of crops
Heavy winds		Left homes Damaged

Table 2: Major Event within the Ward – Community Based Planning Program 2017 (Data Collection)

3.3 Services/ Infrastructure and Programmes Within the Ward Within The 5-Year Period (2012-2016)

Ward 23 has experienced a fair amount of infrastructure investment in the 2015-16 financial year. It is evident that the benefits of these projects have benefited the ward as well as the municipality as a whole.

Type	Year	Beneficiaries	Status / present condition	Impact
Electricity	2015	Matolweni	Good	
Electricity	2016	Fobane	Good	
Electricity	2017	Good Hope	Project still not handed over	
Electricity	2017	Thafa	Good	
Electricity		Mangolong, Bethesda, Sekhutlong	Good	

Table 3: Programmes within the Ward – Community Based Planning Program 2017 (Data Collection)

4. Socio Economic Analysis

4.1. Population Profile

The sub sections below provides an analysis of the population profile of ward 23.

4.1.1. Population Size and Distribution

The total population of Ward 23 is 6339.

LIST OF VILLAGES/ LOCATIONS/SUB AREAS	OTHER NAME/S FOR THE VILLAGE/ LOCATION	NUMBER OF HOUSEHOLDS			POPULATION SIZE (NUMBER OF PEOPLE)		
		Community Feedback	Census 2011	Projected Household by 2050 growing at 0.3% Per Annum	Community Feedback	Census 2011	Projected Population by 2050 growing at 0.4% Per Annum
Good Hope	Damane	122			3500	7 221	
Thafa	-	138				3 732	
Fobane	-	578					
Mangolong	Thakaso	427					
Sekhutlong	N/A	138					

Matolweni	Emitshatshane ni	388					
Bethesda	Luphindo	384					
Total Population - Ward 23:		2175	1557	1717	3500	6339	7203

Table 4: Population Size and Distribution within the Ward – Community Based Planning Program 2017 (Data Collection)



4.1.2. Gender Distribution

The chart below depicts that 54% of the total population of Ward 23 are female. This is typical of most wards within Matatiele. This statistic also speaks to the table below on child headed households.

Gender Distribution

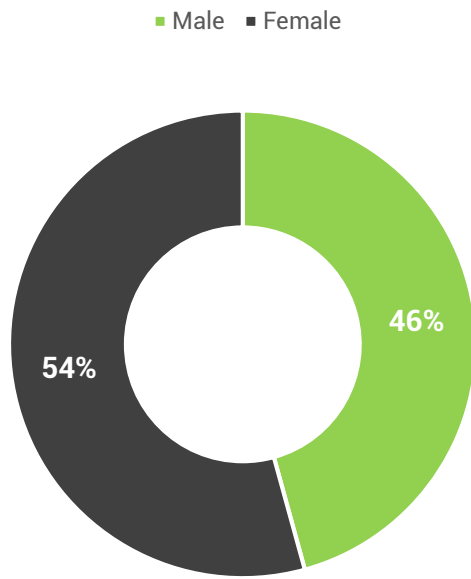


Figure 1: Gender Distribution

4.1.3. Age

The dominant age group in Ward 23 is the classified age group of 10-14yrs. The population of this ward is dominated by younger people (00-19).

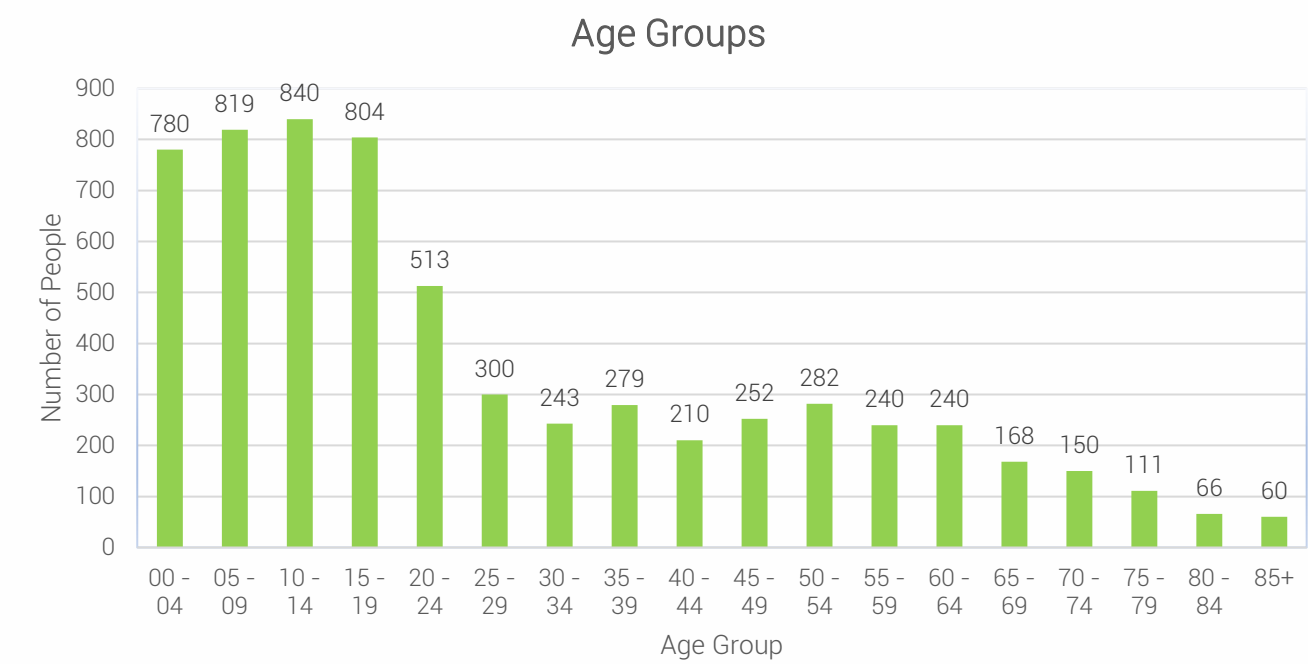


Figure 2: Age within Ward Distribution – Census 2011

4.1.4. Language Distribution

It is evident that the most spoken language in Ward 23 is isiXhosa, followed by Sesotho. The language preference correlates to the racial split within ward 23 and is an indication of the language preference which people appreciate.

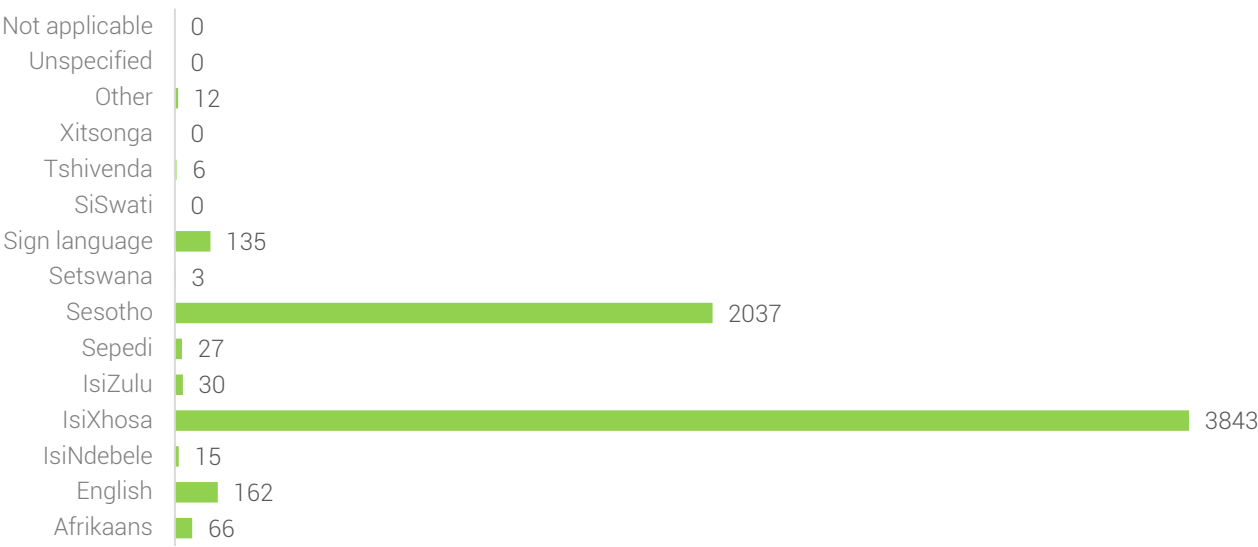


Figure 3: Language Proficiency within Ward – Census 2011

4.1.5. Social Grants

The dependency on grants within Ward 23 has not been noted by the Community survey done by the MLM. However, the data showed that 200 households receive food parcels.

TYPE OF SOCIAL ASSISTANCE OFFERED	NUMBER OF HOUSEHOLDS
	Community Feedback
Food Parcels	200
Old age grant	-
Child support	-
Foster care grant	-
Disability grant	-
Others	80 Food Parcels (By Gift of the givers)

Table 5: Social Grant Dependency within Ward - Community Based Planning Program 2017 (Data Collection)

4.1.6. Indigent Support

A rural municipality with a high dependency rate on social assistance; MLM has a large number of indigent households. Particularly for this ward 23. There a number of indigent households. Although the number is high, it is only a few households that receive indigent supports form the municipality. The challenges that affect to the provision of such support, include beneficiaries with no properly documents, challenges with verification of beneficiaries amongst other issues. The current indigent support register show that only 595 beneficiaries registered in this ward.

Household Profile

The section below details of households within Ward 23 in terms of their size, gender of heads of households and distribution.

4.1.7. Average Household Size

The average household size within Ward .23 includes an average of four (4) persons per household.

4.1.8. Heads of Households.

Villages	Child-Headed households		Female-Headed Households	
	Community Feedback	Census 2011	Community Feedback	Census 2011
All villages	17		226	
Total	17	33	226	846

Table 6: Child and Female Headed Households within the Ward - Census 2011



The graph below indicates that approximately 54% of households in Ward 23 are headed by women.

Gender of Household Head

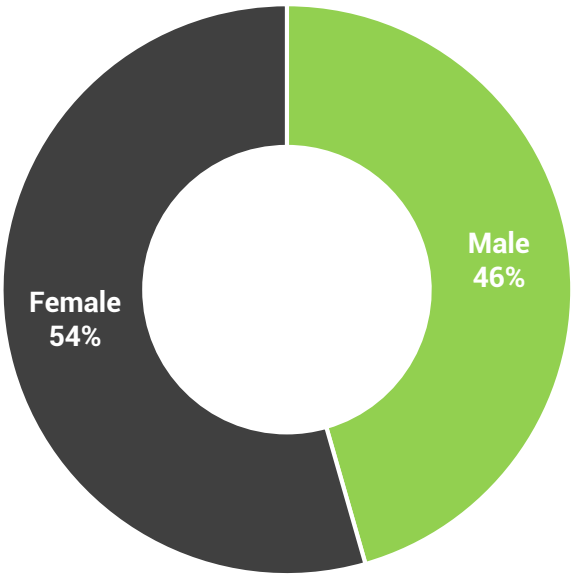


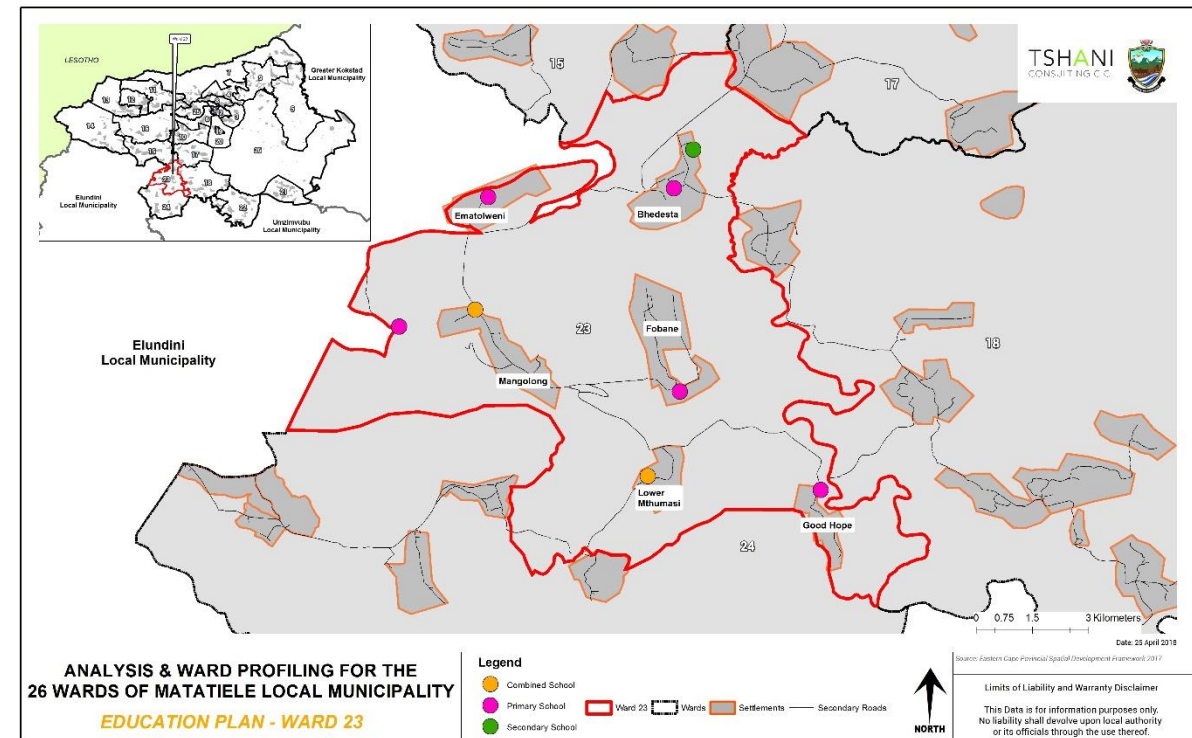
Figure 4: Gender of Household Head

4.1.9. Household Dwelling types

The majority of people in Ward 23 live in Traditional Dwelling/Structure made of Traditional Materials. A significant number also live in a brick/ concrete constructed house.

Damane	S.P.S	Good Hope	57
--------	-------	-----------	----

Table 7: Education Facilities within Ward - Community Based Planning Program 2017 (Data Collection)



Plan 2: Education Facilities

4.2.2. Churches and Religious Organisations: Community Feedback

The range of religious facilities identified in the table below was developed form the community feedback sessions. *Some of the churches do not have the structures, as they operate within the households.*

NA ME	LOCATION/AREA	NUMBER
12 Apostle of Church	Matolweni , Mangolong, Bethesda	3
Almighty God	Matolweni	1
Roman Catholic Church	Matolweni	1
African Gospel	Matolweni	1
Anglican Church	Matolweni, Fobane	2
Presbyterian Church	Fobane	1
Assemble of God	Thafa	1
Methodist Church	Thafa,, Bethesda	2
St Johns church	Good Hope , Fobane	2
Methodist church, Christians of Zion, Ephesians Apostle, CCAC Church, Assembly of God, United Methodist Church, Luther Church,	Bethesda	1
	Mangolong, Sekhutlong	2

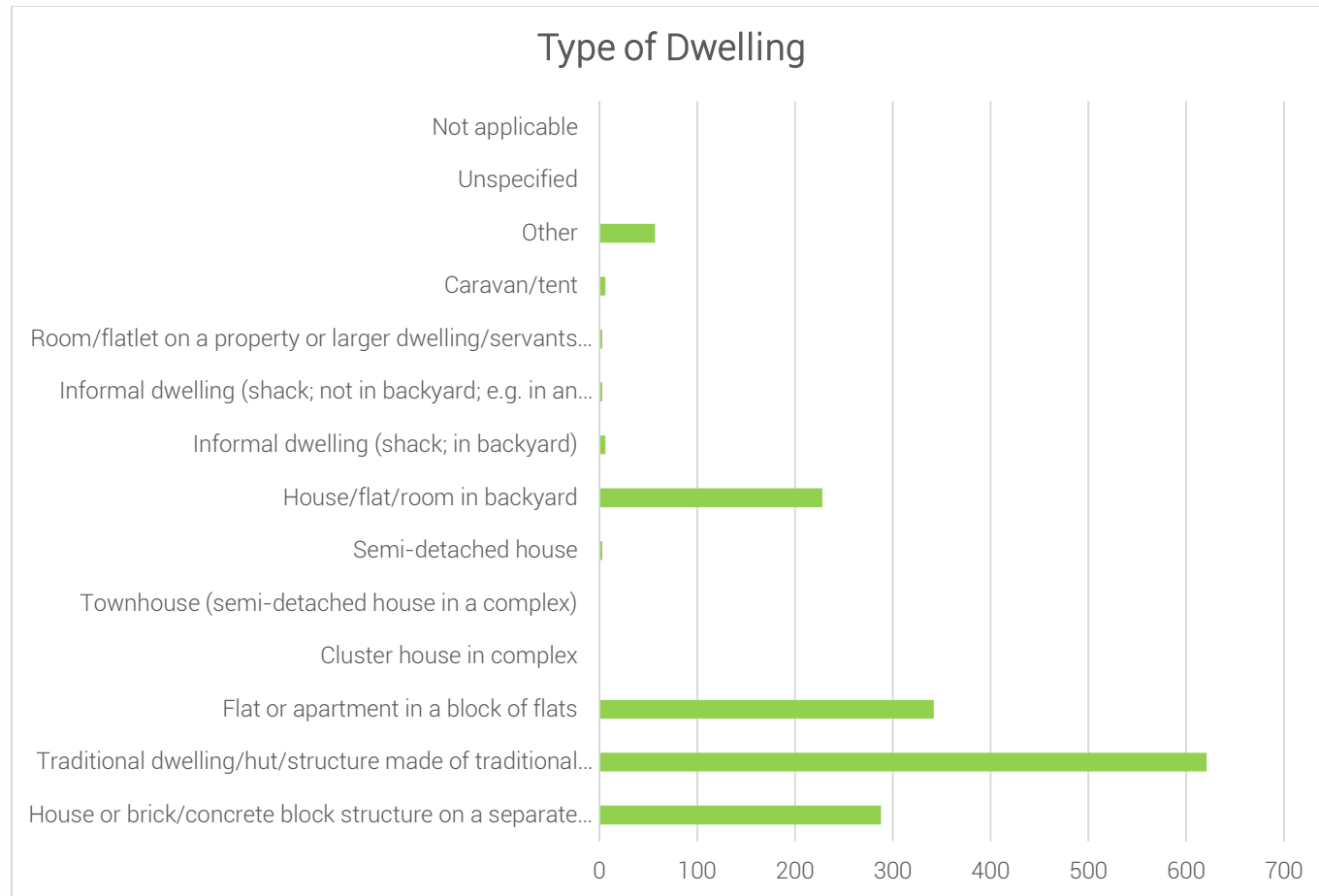


Figure 5: Types of Dwelling within Ward – Census 2011

4.2. Social Profile

4.2.1. Education Facilities: Community Feedback

The range of schools identified in the table below was developed form the community feedback sessions.

NAME	TYPE	AREA LOCATED	NUMBER OF LEARNERS
Bhethesda S.P.S	S.P.S School	Bethesda	182
Emitshathaneni	S.P.S	Matolweni	196
Mangolong	Primary school	Mangolong	314
Sekhutlong	S.P.S	Sekhutlong	137
Fobane	Primary School	Fobane	305
Lower Mthumase	S.P.S	Thafa	98

Free Moravian Church	Bethesda, Thafa, Good Hope, Fobane	4
Zion	Sekhutlong, Mangolong, Fobane, Bethesda	4
Christians of Zion	Bethesda	1
Ephesians Apostle	Bethesda	1
CCAC Church,	Bethesda	1
United Methodist Church	Bethesda	1

Table 8: Churches and Religious Organisations within the Ward - Community Based Planning Program 2017 (Data Collection)

4.2.3. Health Care Facilities: Community Feedback

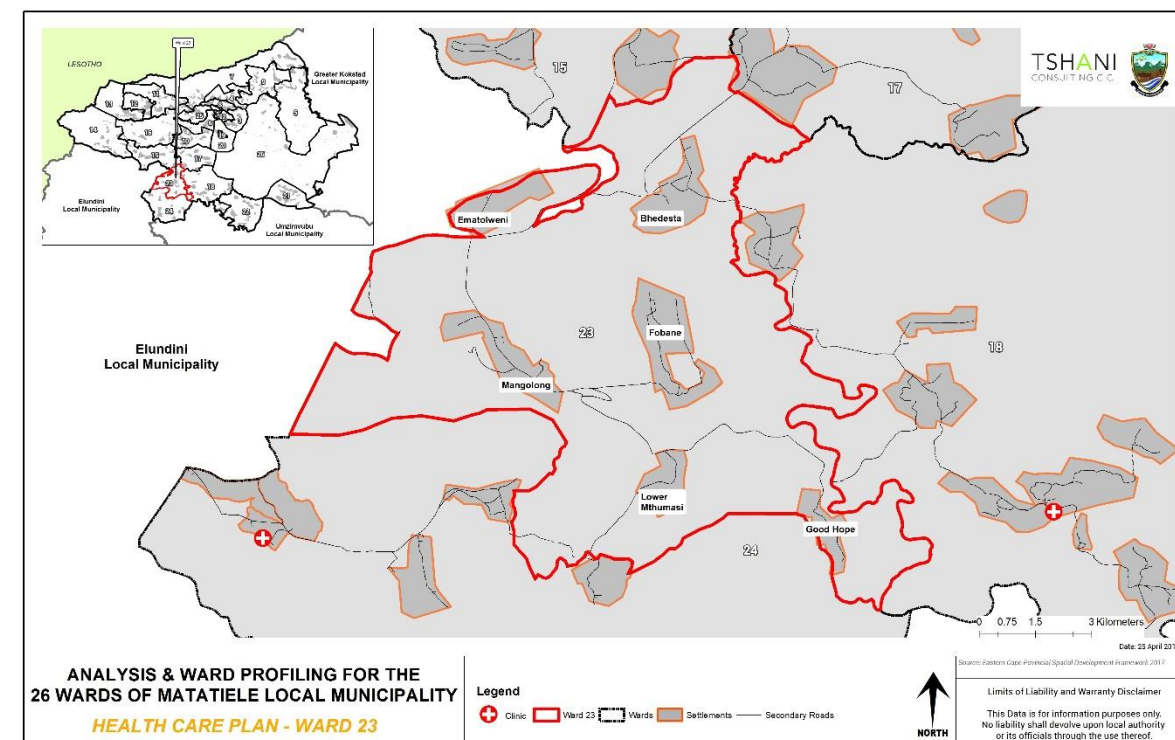
The community feedback identified 1 health centre which is a Mobile Clinic that services these villages: Matolweni, Bethesda, Thafa, Fobane, Good Hope and Mangolong. This single facility is intended to service the Ward which is not ample.

Name and type	Area located	Primary services provided
Mobile Clinic	Matolweni, Mangolong, Fobane, Bethesda, Thafa, Goodhope	Family Planning, Testing of BP, HIV, Diabetes

Table 9: Health Care Facilities: Community Based Planning Program 2017 (Data Collection)

4.2.4. Health Care Facilities:

The map below spatially identifies clinic which is located just in Ward 23.



Plan 3: Health Care Facilities

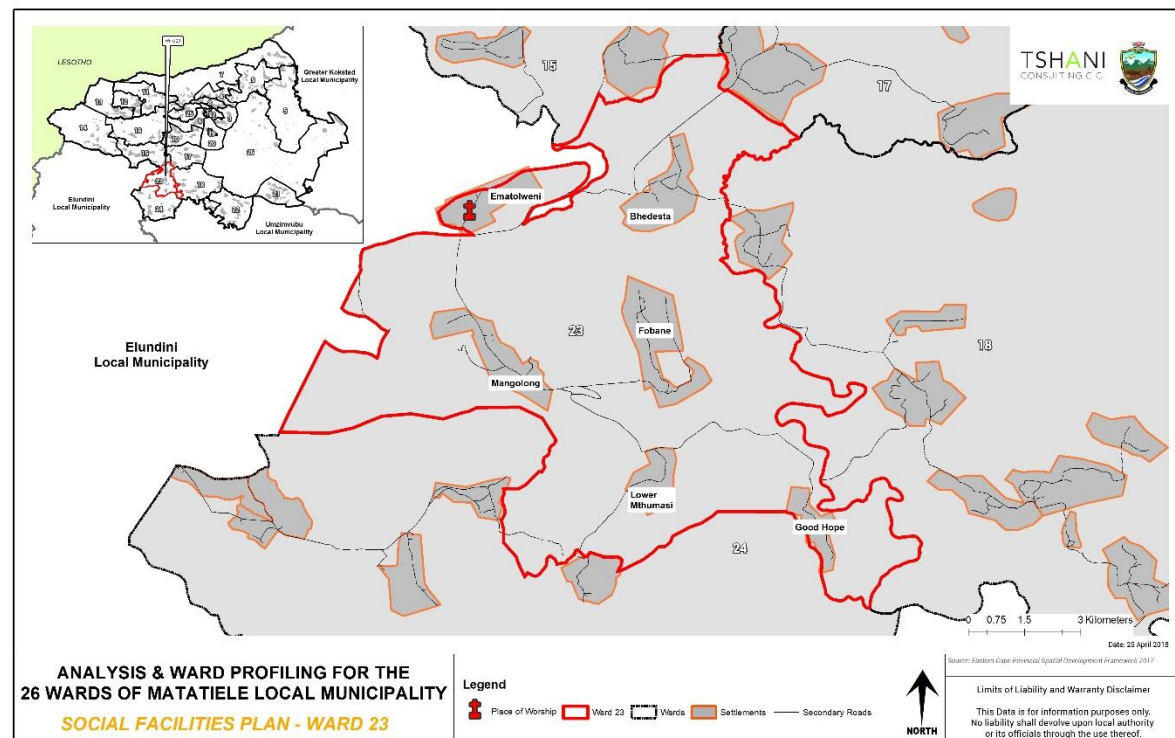
4.2.5. Community Hall: Community Feedback

Name and type	Area located
Mangolong Community Hall	Mangolong

Table 10: Community Halls - Community Based Planning Program 2017 (Data Collection)

4.2.6. Other Social Facilities

The map below spatially identifies places of worship only in Ematolweni village within ward 23 from Census 2011.



Plan 4: Other Social Facilities

4.3. Economic Profile

4.3.1. Individual Monthly Income

Over half of the population of ward 23 receives less than R800 or no income monthly. This community has a high number of low income earners.

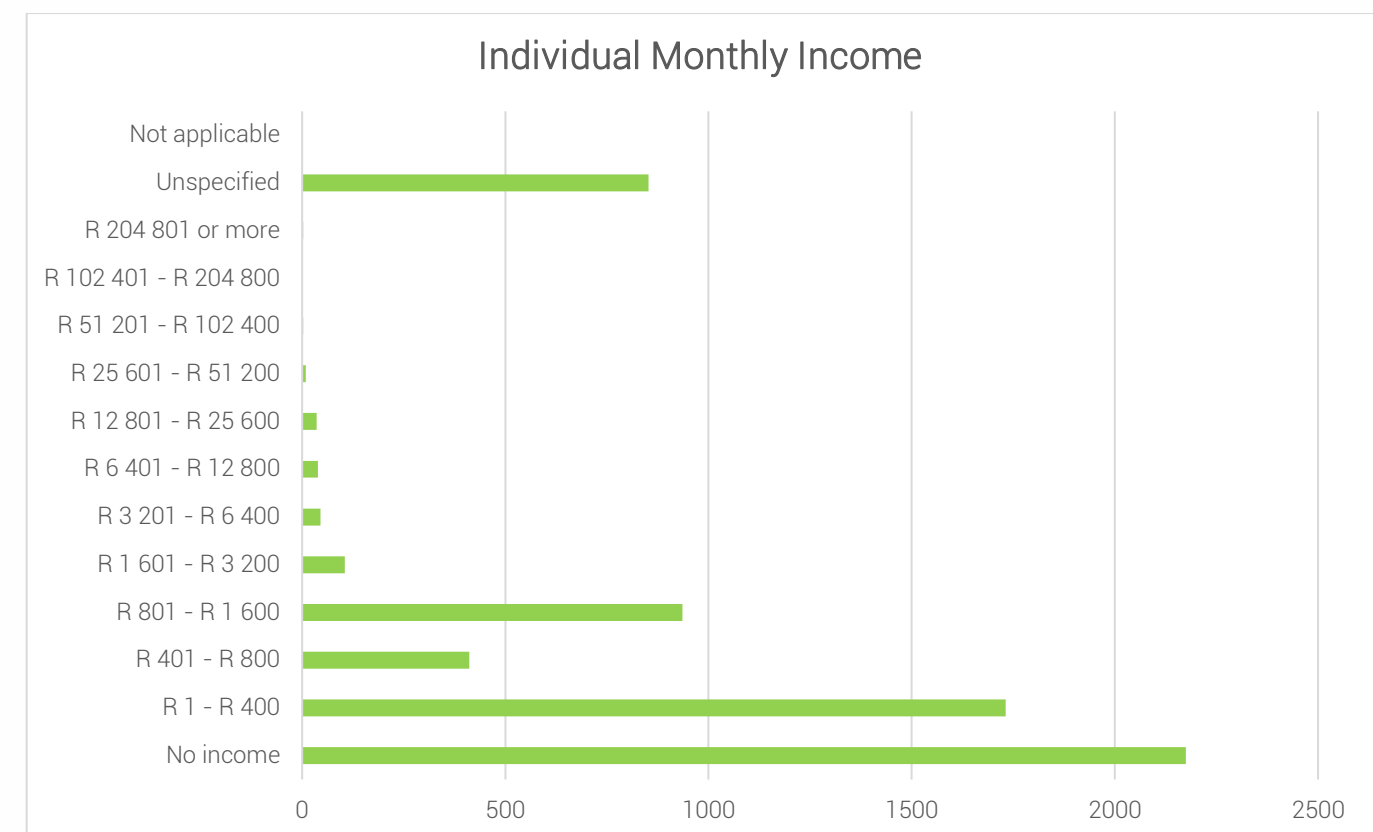


Figure 6: Individual Monthly Income - Census 2011

4.3.2. Economic Activities: Community Feedback

It is noted that shops that sell alcohol are the most dominant in ward 23 facilities which retail alcoholic beverages were noted at Ward 23. This is very typical of areas with a very high unemployment rate and youth. A hair salon and internet cafe were also recorded in ward 23.

RETAIL (INDICATE SHOPS, SPAZA SHOPS, CAFÉ, TARVENS, SALONS, ETC)	
TYPE	LOCATION
Spaza (3),shop (1), Shebeens (4)	Matolweni
Spaza (6), Shops (2), Tarven (1), Shebeens (4)	Fobane
Spaza (1), Shops (2), Tarven (1)	Thafa
Spaza (3), Shebeens (2)	Goodhope
Spaza (3), Shops (3), Shebeens (9)	Mangolong
Spaza (4), Shops (1)	Bethesda
Spaza (2), Shop (1), Shebeens (2)	Sekutlong

Table 11: Economic Activity - Community Based Planning Program 2017 (Data Collection)

4.3.3. Tourism Activities

There are no tourism activity in ward 23.

TOURISM (INDICATE B&B'S, HOTELS, ATTRACTION SITES, ETC)	
TYPE	LOCATION
n/a	n/a

Table 12: Tourism Activities - Community Based Planning Program 2017 (Data Collection)

4.3.4. Agricultural Activities

The community of ward 23 practises both commercial and subsistence farming for their agricultural products. There should be encouragement to sell for the community, as a source of income generation than mainly for household consumption.

TYPE OF PRODUCTS	FOR HOUSEHOLD CONSUMPTION	FOR SELLING TO THE COMMUNITY
Cattle	Yes	n/a
Sheep	Yes	
goats	Yes	
horses	Yes	
Poultry	Yes	

Table 13: Agricultural Activities- Community Based Planning Program 2017 (Data Collection)

4.3.5. Products Produced in Wards

The table below indicates that products such as traditional clothing and crafts are available within the ward that are locally produced.

TYPE OF PRODUCTS	AREAS / VILLAGES	FOR HOUSEHOLD CONSUMPTION	FOR SELLING TO THE COMMUNITY
Producing Eggs and Chickens	Mangolong	Yes	Yes
Sewing	All villages	Yes	Yes
Hand Craft	Mangolong		Yes

Table 14: Products produced within the Ward

4.3.6. Existing Skills

The ward constitutes of some diverse skills which is a major asset for the ward. Such individuals need to be further trained and opportunities to mentor other unemployed individuals within the community should be encouraged.

TYPE OF SKILLS	EXISTING (INDICATE WITH YES/NO)	TYPE OF SKILLS	EXISTING (INDICATE WITH YES/NO)
Carpenters	Yes	pottery	Yes
Plumbing	Yes	teachers	Yes
Builders	Yes	Police	Yes
Artists	Yes	Health officials	Yes
Gardening	Yes	Accountants	Yes
Cooking	Yes	Engineers	Yes
Sewing	Yes	Lawyers	Yes
Writing	Yes	Other (indicate)	
Drivers	Yes		
Farmers			

Table 15: Existing Skills within the Ward: Community Based Planning Program 2017 (Data Collection)

5. Built Environment Assessment

5.1 Access to Waste Removal

The Municipality does not provide the waste collection removal in this ward, hence ward 23 people dispose their own waste.

5.2 Access to Water

The main supplier of water is the District Municipality (ANDM) which currently provides water to Matatiele area. There is a large backlog with regards the provision of water, within ward 23 only three villages have access to water and 6 villages have no access to water as a results a large number of people have to walk at least 1km away to source water from the dams or streams as shown below table.

VILLAGE/LOCATION	COMMUNITY TAPS	WATER-INSIDE YARD	WATER-INSIDE HOUSE	BOREHOLES	DRAW WATER FROM STREAMS, DAMS, RIVER
Good Hope				1 even though it is not working	Yes
Thafa				2 borehole are working	Yes
Fobane				1	Yes
Mangolong	Yes			2	Yes
Sekhutlong	Yes			2 boreholes but only 1	N/A

				borehole is working	
Matolweni	Yes				Yes
Bethesda				2 boreholes but only 1 is working	Yes

Table 16: Access to water: Community Based Planning Program 2017 (Data Collection)

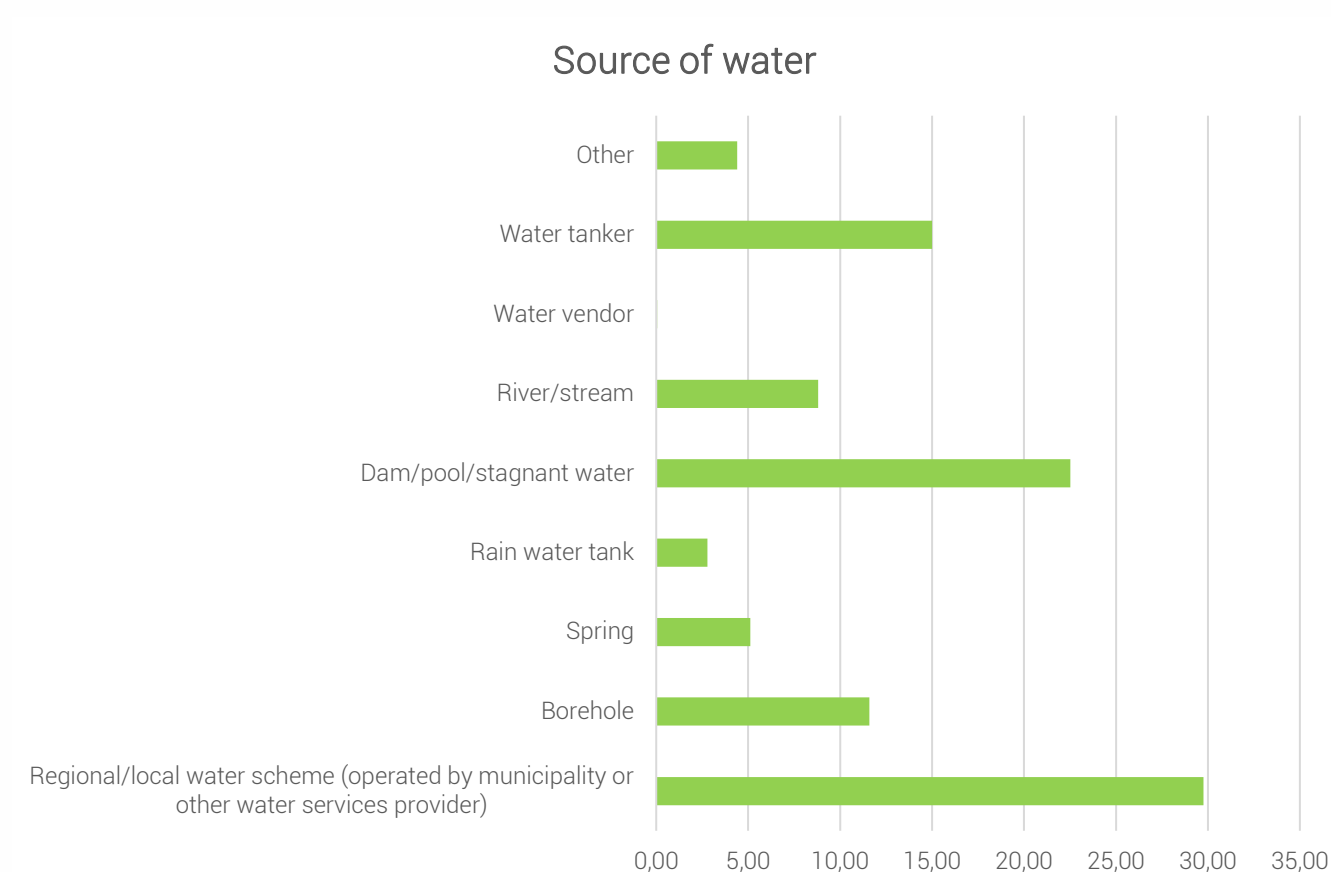


Figure 7: Source of Water supply within the Ward - Community Based Planning Program 2017 (Data Collection)

5.3 Access to Sanitation

The levels of sanitation which characterise Ward 23 is not of very good standard. A few households use pit toilets with no ventilation.



Figure 8: Access to Sanitation Facilities – Census 2011

5.4 Main Source of Energy

Most villages within ward 23 have indicated the use of electricity as the main source of energy. All villages within ward 23 have access to electricity.

VILLAGE	ELECTRICITY	SOLAR	NO ELECTRICITY/ SOLAR
Goodhope	Yes		
Thafa	Yes		
Fabane	Yes		
Mangolong	Yes		
Sekhutlong	Yes		
Matolweni	Yes		
Bethesda	Yes		

Table 17: Source of Energy- Community Based Planning Program 2017 (Data Collection)

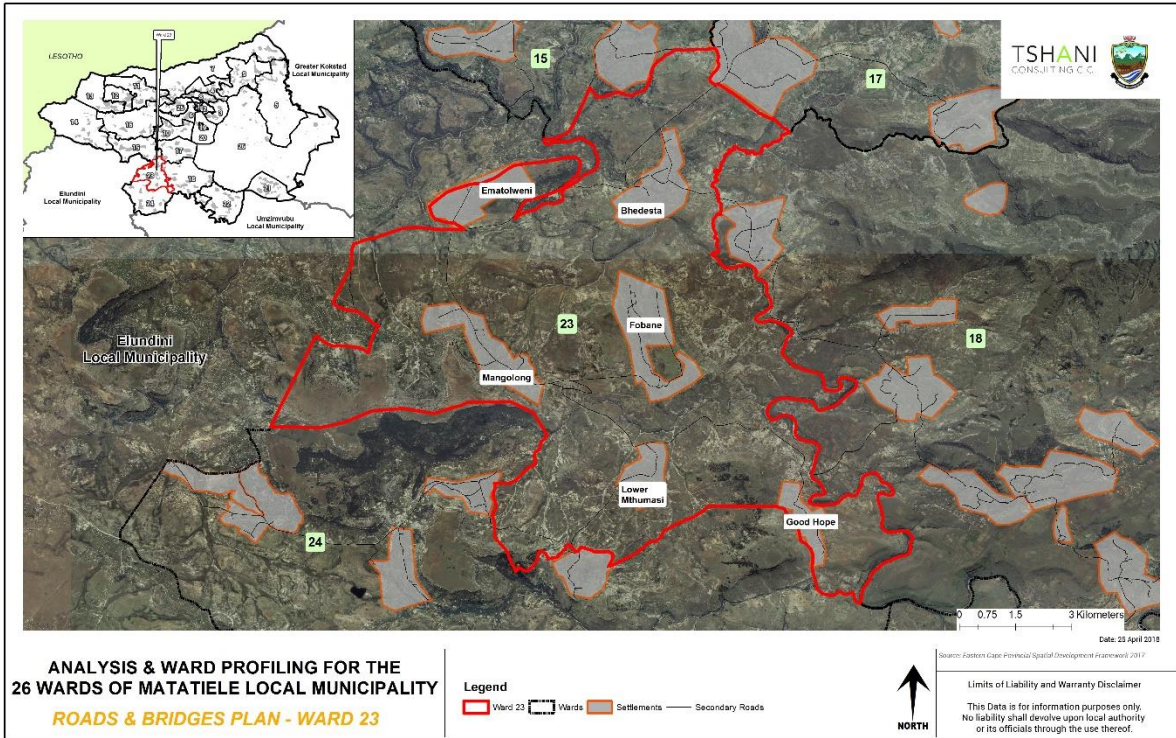
5.5 Roads and Bridges

There are roads and bridges located within Ward 23, the plan below picks up on the extent of roads networks which are present within the ward. The map identified that there are bridges and roads within ward 23 in Ematolweni, Lower Mthumasi, Good Hope, Mangolong and Bhedasta.

NAME AND TYPE	AREAS COVERED	CONDITION OF THE ROADS
Main road	Greennacker to Goodhope DR 0841	Bad

Access Road	Bhethesda, Sekhutlong, Thafa, Fobane, Goodhope,	Bad
Bridges	Thafa, Goodhope, Bethesda	Bad

Table 18: Roads and Bridges within the Ward



Plan 5: Roads and Bridges within the Ward - MLM GIS

6. Current Projects

The following table highlighted the key projects which have been identified by the community. The projects are mainly linked to education.

No	PROJECT/PROGRAMME NAME	STATUS	WHO IS RESPONSIBLE
	Thakaso Project	Stopped	Alfred Nzo
	Mahaqase Projects	On going	Agriculture
	Kuyakhanya	On going	Social Development

Table 19: Current Projects within the Ward

7. Ward Needs and Priorities

The need and priorities which have been identified need to be prioritised in the municipal SDF and other local plans created. The projects range from short to long term projects and have been further broken down in the implementation plan.

VILLAGE/LOCATION/ SUB AREA	NEEDS IDENTIFIED
Mangolong	Clinic, RDP Houses, Sanitation, Access road (virgin), Pre-school, fencing of fields, Apolo Lights, Dipping Tank, Job creation, Electricity Infills
Good-Hope	Shopping Centre, Pay-point station, Mthumasi Bridge, Thafa to Good-Hope Bridge, Good-Hope Bridge, fencing of fields, Access road (virgin), RDP Houses, Sanitation, Shearing Shred, Pre-school, Sport field, Network Pole
Fobane	Shopping Centre, RDP Houses, Clinic, Water, Apolo lights, maintenance of access road, dipping tank
Matolweni	Shopping mall, RDP Houses, Clinic, Apolo Lights
Bethesda	RDP Houses, Sanitation, Community hall, sport field, access road, Clinic, Shearing Shred, Ploughing of fields
Sekhutlong	Clinic, RDP Houses, Sanitation, Pay-Point station, Maintenance of Access road
Thafa	Apolo lights, Pre-school, access road (virgin), T-Road maintenance, Bridge, RDP Houses, Dipping Tank, Water, Sport field, Sanitation, Clinic, Poultry project need assistance with funding

Table 20: Ward Needs

WARD 23	
INFRASTRUCTURE PRIORITIES	SOCIO- ECONOMIC PRIORITIES
RDP Houses	1. Fencing & Ploughing of fields
Apollo Lights	2. Sanitation
Clinic	3. Sport field
Access Road	4. Dipping Tank
Shopping centre	5. Pay-point station

Table 21: Ward Priorities

8. Stakeholder within Ward

The table below highlights the stakeholders which were engaged with during the Community engagement sessions.

NAME OF STAKEHOLDER	CONTACT PERSON AND TEL
Mahaqase Fobane	082 096 3218
Mokhibo – Mangolong	078 198 1821
Msino - Mangolong	078 841 4837
Velabahleke – Fobane	073 325 5146
Inciyo - Matolweni	076 711 9146

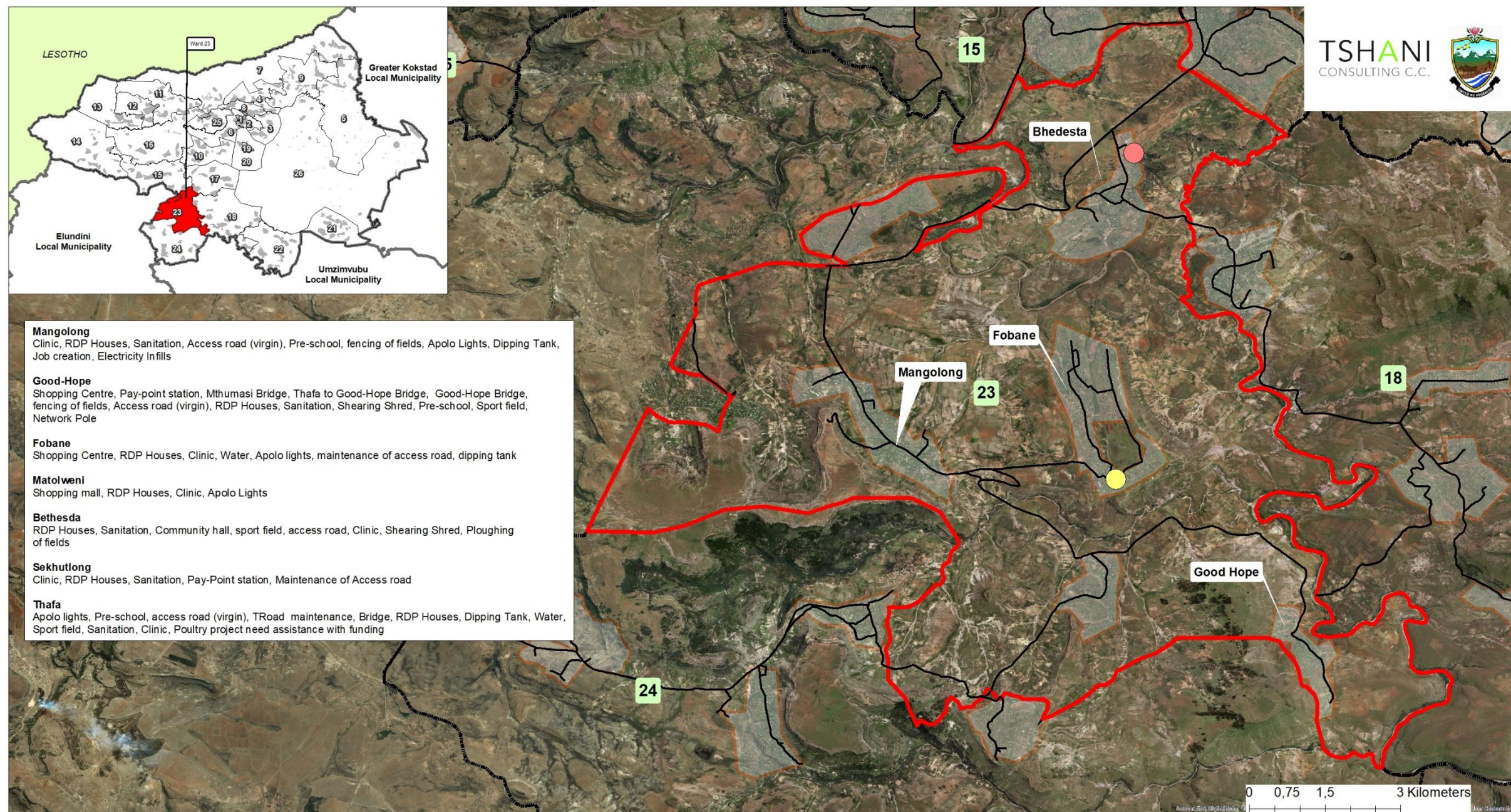
Table 22: Stakeholders engaged in community sessions- Community Based Planning Program 2017 (Data Collection)

9. Key Social Challenges

The ward has identified stock theft, drug and alcohol abuse, house breaking and unemployment as the key social challenges. Such challenges are a popular trend in areas with a high youthful population and limited employment opportunities. Various departments should be engaged to address such social challenges as they affect all villages within the ward.

CHALLENGE IDENTIFIED	VILLAGE AFFECTED	IMPACT
Stock theft	All villages	Leaves victims vulnerable as the issue is not dealt with by SAPS
House breaking	All villages	Loss of property
Drug and alcohol abuse	All villages	Assault, increase in school dropout rates,

Table 23: Key Social Challenges- Community Based Planning Program 2017 (Data Collection)



Date: 26 April 2018

ANALYSIS & WARD PROFILING FOR THE 26 WARDS OF MATATIELE LOCAL MUNICIPALITY

WARD PRIORITY - WARD 23

Legend

- IRM
- DoE
- Ward 23
- Wards
- Settlements
- Secondary Roads



Source: Eastern Cape Provincial Spatial Development Framework 2017
Matatiele Local Municipality

Limits of Liability and Warranty Disclaimer

This Data is for information purposes only.
No liability shall devolve upon local authority
or its officials through the use thereof.